

The Stormwater Pollution Prevention Plan

Arizona Stormwater Outreach for Regional
Municipalities (STORM)



LOGAN SIMPSON

SWPPP

● Starting out and what to know

Construction General Permit

- Construction projects disturbing 1 acre or more require a SWPPP

Plans and Special Provisions

- Define Specific Project Requirements



SWPPP

◉ Additional Items Needed:

- > Job site address and phone number
- > Construction start date and projected completion date
- > CPM (critical path method) schedule
- > Name of person responsible for SWPPP
- > Training History
- > List of subcontractors
- > Identify person responsible for Water Pollution Control
- > Copies of environmental permits (Army Corps, local agency permits),
- > Soils/Geotechnical report/Materials report
- > Drainage report or documentation depicting drainage patterns and offsite flow calculations
- > Notice of Intent (NOI)



SWPPP

● 12 Steps for CGP Coverage

1. Prepare SWPPP
2. Certify SWPPP
3. Submit NOI
4. Retain SWPPP and NOI at site
5. Implement SWPPP
6. Inspect the Control Measures regularly



SWPPP

- 12 Steps for Obtaining AZPDES Permit Coverage Cont.
 7. Adjust/amend the SWPPP to fit site
 8. Maintain updated SWPPP
 9. Maintain Control Measures
 10. Determine whether Final Stabilization is achieved
 11. Submit NOT
 12. Retain records for three years after project is complete



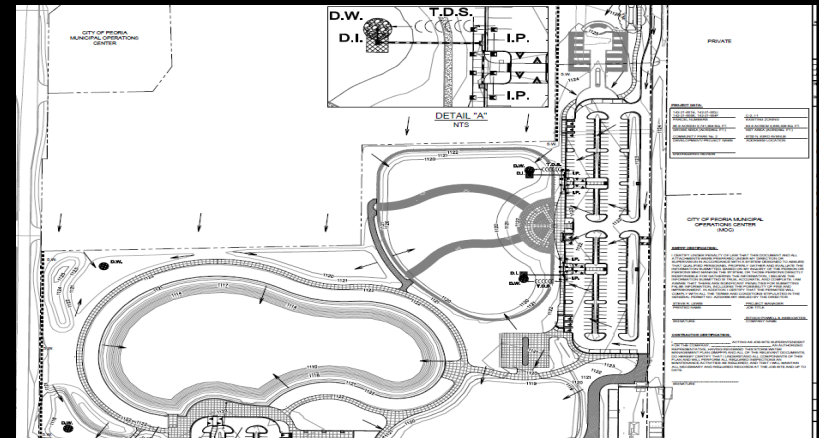
SWPPP

- ◉ Timetable
 - ◉ If the process is new, it can be a struggle
 - ◉ Proficient SWPPP writers:
 - > 2-3 Days to gather information
 - > 2-3 Days to Study the plans, permits, etc. and put together the text and drawings
 - > A day or two to get it typed up formatted and printed



SWPPP

- ◉ Preparing the SWPPP
 - > A complete SWPPP is made before the NOI is populated/submitted
 - > Identify Operators
 - > Describe site and prepare schedule
 - > Select Control Measures (BMPs)
 - > Prepare Control Measures Maintenance Plan
 - > Collect Permit-related documents
 - > Comply with Federal, State and Local Programs
 - > Develop Inspection Plan



SWPPP CERTIFICATION:

I CERTIFY UNDER PENALTY OF LAW THAT THIS DOCUMENT AND ALL ATTACHMENTS WERE PREPARED UNDER MY DIRECTION OR SUPERVISION IN ACCORDANCE WITH A SYSTEM DESIGNED TO ASSURE THAT QUALIFIED PERSONNEL PROPERLY GATHER AND EVALUATE THE INFORMATION SUBMITTED. BASED ON MY INQUIRY OF THE PERSON OR PERSONS WHO MANAGE THE SYSTEM, OR THOSE PERSONS DIRECTLY RESPONSIBLE FOR GATHERING THE INFORMATION, I BELIEVE THE INFORMATION SUBMITTED IS TRUE, ACCURATE, AND COMPLETE. I AM AWARE THAT THERE ARE SIGNIFICANT PENALTIES FOR SUBMITTING FALSE INFORMATION, INCLUDING THE POSSIBILITY OF FINE AND IMPRISONMENT. IN ADDITION I CERTIFY THAT THE PERMITEE WILL COMPLY WITH ALL THE TERMS AND CONDITIONS STIPULATED IN THE GENERAL PERMIT NO. AZG2008-001 ISSUED BY THE DIRECTOR.

One 11 x 17 showing silt fence and a permit certification statement is not a SWPPP!



SWPPP

- Use a template for compliance with EPA and ADEQ CGP
- Should be used as a format for SWPPP development and updated for each project
- ADOT has a downloadable form
- Include monitoring Sampling and Analysis Plan (SAP) if site is within ¼ mile of an OAW or Impaired water



SWPPP

<http://www.azdot.gov/business/environmental-planning/water-resources/additional-resources>

The screenshot shows the ADOT website's 'Additional Resources' page for 'Water Resources'. The page features a navigation menu with categories like 'About', 'Motor Vehicles', 'Projects', 'Business', 'Planning', 'Media', 'Traffic', 'Maps', and 'Contact'. A breadcrumb trail reads 'Home / Business / Environmental Planning / Water Resources / Additional Resources'. A 'subscribe for updates' button is visible in the top right. The main content area is titled 'Environmental Planning' and 'Water Resources', with sub-sections for 'Overview', 'Stormwater Discharge Permit', 'Manuals', 'Additional Resources', and 'Contact Us'. Under 'Additional Resources', a 'New! Stormwater Templates' section lists 'SWPPP Template' and 'Instructions for ADOT SWPPP Templates'. The 'SWPPP Template' link is circled in red. Below this, a paragraph explains the template's purpose for meeting regulatory requirements, and a 'Monitoring SAP Template' link is also listed.

ADOT

Home / Business / Environmental Planning / Water Resources / **Additional Resources**

subscribe for updates

Environmental Planning

Water Resources

Overview Stormwater Discharge Permit Manuals **Additional Resources** Contact Us

Additional Resources

New! Stormwater Templates

These documents are intended for use statewide and are available.

- **SWPPP Template**
- Instructions for ADOT SWPPP Templates

The SWPPP template offers practical guidelines for meeting regulatory requirements when operating construction projects on tribal and non-tribal lands. Both NPDES (2012) and AZPDES (2013) Construction General Permit requirements are included as options when preparing this document. Inapplicable information may be deleted, as necessary.

- Monitoring SAP Template

The Monitoring SAP template accommodates document preparation for projects on non-tribal land that require sampling and analysis in accordance with the AZPDES Construction General Permit (2013).

SWPPP

- EPA 2012 CGP and ADEQ 2013 CGP based

<http://www.azdot.gov/docs/default-source/business/swppptemplate.dotx>



STORMWATER POLLUTION PREVENTION PLAN

For
[Insert project name.]

Federal Aid No.: [insert no.]
ADOT Project No.: [insert no.]

Route: [insert no.]	Milepost (Start): [insert no.]	Milepost (End): [insert no.]
	Latitude (Start): [insert degrees, minutes, seconds]	Latitude (End): [insert degrees, minutes, seconds]
	Longitude (Start): [insert degrees, minutes, seconds]	Longitude (End): [insert degrees, minutes, seconds]

Submittal Date:
[Select submittal date.]

Identify Receiving Water:
[Select applicable text.]

Prepared by:
[insert name.]
[insert company/organization.]
[insert street address.]
[insert city, state zip code.]

The logo for the Arizona Department of Transportation (ADOT), featuring the letters 'ADOT' in a stylized, bold font with a green-to-purple gradient.

Arizona Department of Transportation
207 S. 17th Avenue
Phoenix, AZ 85007-3219

CGP Authorization No. [insert no.]

SWPPP

Template



SWPPP

◎ ADEQ SWPPP Checklist

- > This optional form is intended to assist the applicant in the preparation of the Stormwater Pollution Prevention Plan (SWPPP)
- > The “Permit Citation” column indicates where the particular requirement can be found in the AZPDES Construction General Permit (CGP)
- > Use the “Location” column to note where the requirement can be found in the SWPPP



SWPPP

- ADEQ SWPPP Checklist
 - > Optional form intended to assist the applicant in the preparation of the SWPPP

http://www.azdeq.gov/enviro/water/permits/download/cgp_swapp_checklist.pdf



Arizona Stormwater Construction General Permit (CGP2013) Stormwater Pollution Prevention Plan (SWPPP) Checklist

In accordance with Arizona's Stormwater Construction General Permit (CGP-2013), Part 6.1, an operator is to develop a Stormwater Pollution Prevention Plan (SWPPP) before submitting the Notice of Intent (NOI) for permit coverage and prior to conducting any construction activity. For construction projects initiated under CGP-2008, this checklist may also be used to update an existing SWPPP for an ongoing construction project to meet the requirements of CGP-2013.

Although the use of this SWPPP checklist is not required, operators are encouraged to use this checklist to help ensure the site SWPPP meets the requirements of Arizona's CGP-2013 (AZG2013-001). The "Descriptions" provided below do not necessarily reflect the exact wording used in the permit, rather these are stated in simplified language to provide additional guidance. (Note: If any inadvertent conflict exists between this document and the permit, the permit language prevails). The "Permit Citation" column shows you where each particular requirement is found in the CGP-2013. Use the "Location in the SWPPP" column to note the page where the requirement is addressed in your SWPPP or use "N/A" (not applicable) if your project doesn't include the activity or information described. Please leave the "For ADEQ Use Only" column blank. Using this SWPPP checklist will help you ensure that all the permit requirements are addressed in your SWPPP and will also assist the Department in conducting a more efficient review of your SWPPP if it is required to be submitted.

Please note that your SWPPP does not have to follow the format of this checklist; the purpose of this checklist is to help ensure that your SWPPP contains all required components. This checklist includes information and guidance for preparing your initial SWPPP, as well as information to include throughout the duration of your construction project, including control measures, inspections, corrective actions, and other pertinent information.

Stormwater Pollution Prevention Plan Description of Requirements	Permit Citation	Location in SWPPP	For ADEQ Use Only
SWPPP Contents			
All operator(s) shall sign and certify the SWPPP.	6.1(3)		
Identify the name, title, contact information and a description of the qualifications and a copy of any training certificates of each operator, or group of operators, including inspector(s), as well as the areas and phases over which each operator has control.	6.3(1 & 2)		
Describe the nature of construction activities, including the size of the property, the total area expected to be disturbed by the construction activities, the construction support activity areas covered by this permit and the maximum area expected to be disturbed at any one time.	6.3(3)		
Sequence and Estimated Dates of Construction Activities			
Installation of stormwater control measures.	6.3(4)a		
Commencement and duration of construction activities.	6.3(4)b		
Cessation, temporarily or permanently, of construction activities on the site, or in designated portions of the site including the beginning and ending dates of inactive/unstaffed status, when applicable.	6.3(4)c		

Questions



L O G A N S I M P S O N

- ◉ Kevin Boesch, CPESC
 - ◉ Senior Permitting Specialist
-
- > Tempe, AZ
 - > P (480) 967-1343
 - > C (480) 305-3637
 - > kboesch@logansimpson.com
 - > www.logansimpson.com

